

Energy Storage **LiFePO4 Battery** Power Your Life

Smart technology coexists with nature
to power your home



ELFBULB, Power Your LiFe

Yuyang New Energy Co., Ltd is a high-tech enterprise set up in 2010 and focus on R&D, manufacture, and sales of LifePo4 rechargeable lithium energy storage batteries. With a sales & customer service center in Shenzhen, and production factory in Dongguan covering an area of over 30,000 sqm, we are committed to the development and application of renewable energy.

We have over 200 production workers, and the export of our factory in 2022 exceeded 70 million US dollars. Our main product category includes home energy storage series, commercial & industrial use big capacity energy storage container systems, and low speed vehicle batteries. Under the home use energy storage category, we have wall mounted type storage batteries, stackable type batteries, and battery & inverter 2in1 systems to cover from 5KWH to 50KWH, with low voltage and high voltage options; Under the commercial & industry category, we have high voltage battery cabinets covering from 50-100KWH and all in one ESS covering 200KWH-2000KWH. Under the low speed vehicle batteries, our battery covers the use of golf cart, speedboat, forklift, etc.

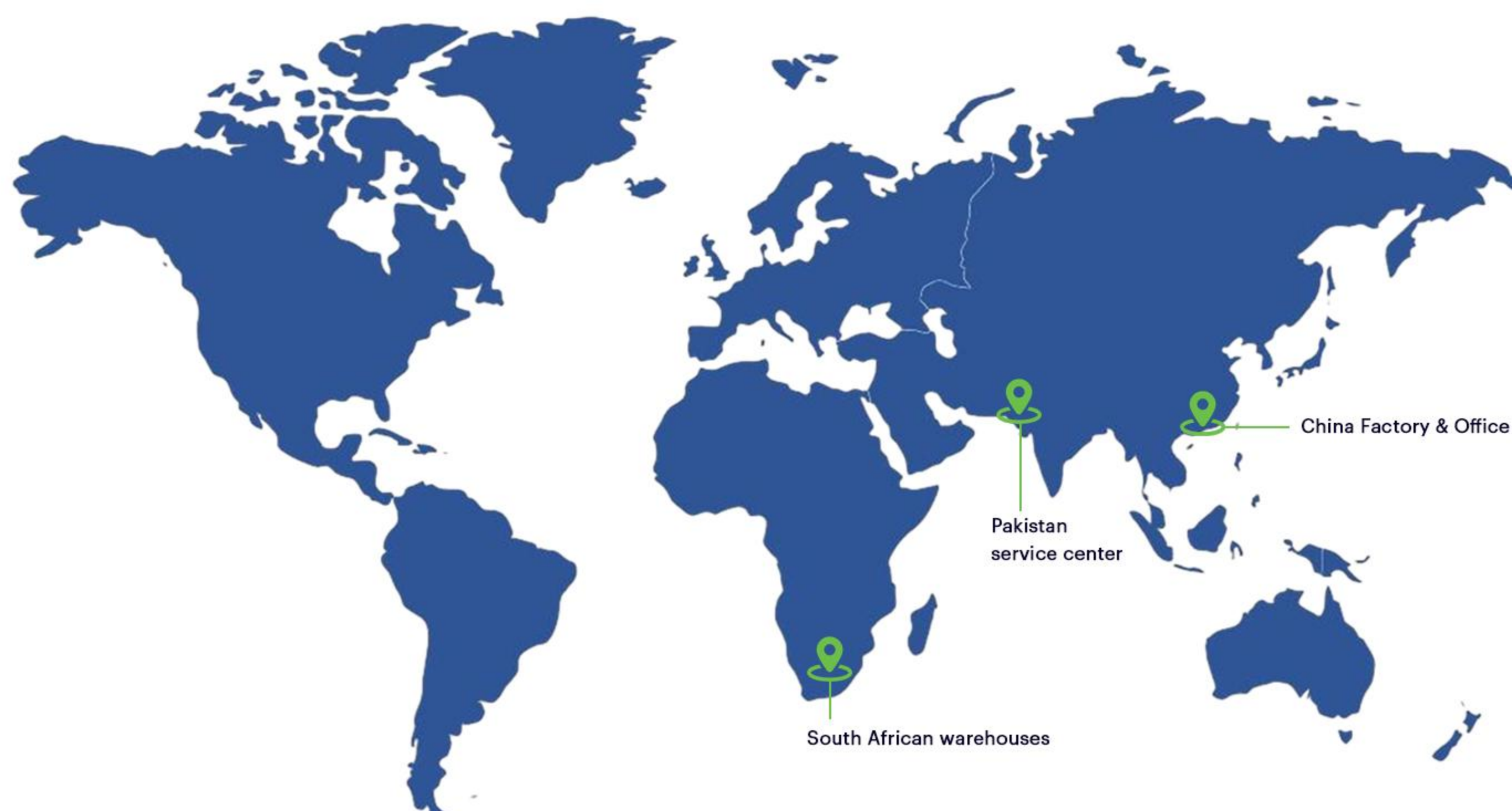
As a scaled and professional LifePO4 lithium energy storage battery manufacturer, we have close cooperation with reputed cell brands including BYD, CATL, GOTION,EVE, REPT, Sunwoda, Gotion and so on. The production capacity of our factory can reach 20,000 units various battery packs monthly, and in order to assure the stable supply to our valued customers we retain a safety stock of 8 million USD for battery cells. Our company has obtained ISO9001: 2008 quality management system and ISO14001: 2004 environmental quality system certifications. All our exported products have got CE certification and passed China customs authoritative testing.



R&D and manufacturing highlights

- > Persistent technology innovation
- > All-round testing
- > Intelligent design
- > Automated production line
- > Using high-quality battery cells
- > Support customization and OEM/ODM
- > Providing customized solutions

Worldwide transport and South African warehouses



Dedicated to providing new energy solutions

ELFBULB is committed to new energy solutions, and we are proud to provide professional solutions to our customers.

- ✓ **Low-speed vehicle batteries**, including golf carts, boat, etc.
- ✓ **Commercial and industrial systems**, including 215Kwh commercial and industrial energy storage systems, etc.
- ✓ **Home energy storage systems**, including wall mounted battery, rack mounted battery, satcked battery, etc.
- ✓ **Container ESS**, including 1MWH 2MWH 5MWH energy storage container systems, etc.



Wall Mounted LiFePO4 Battery **Hot Series**

LiFePo4 Battery Module

15 Units

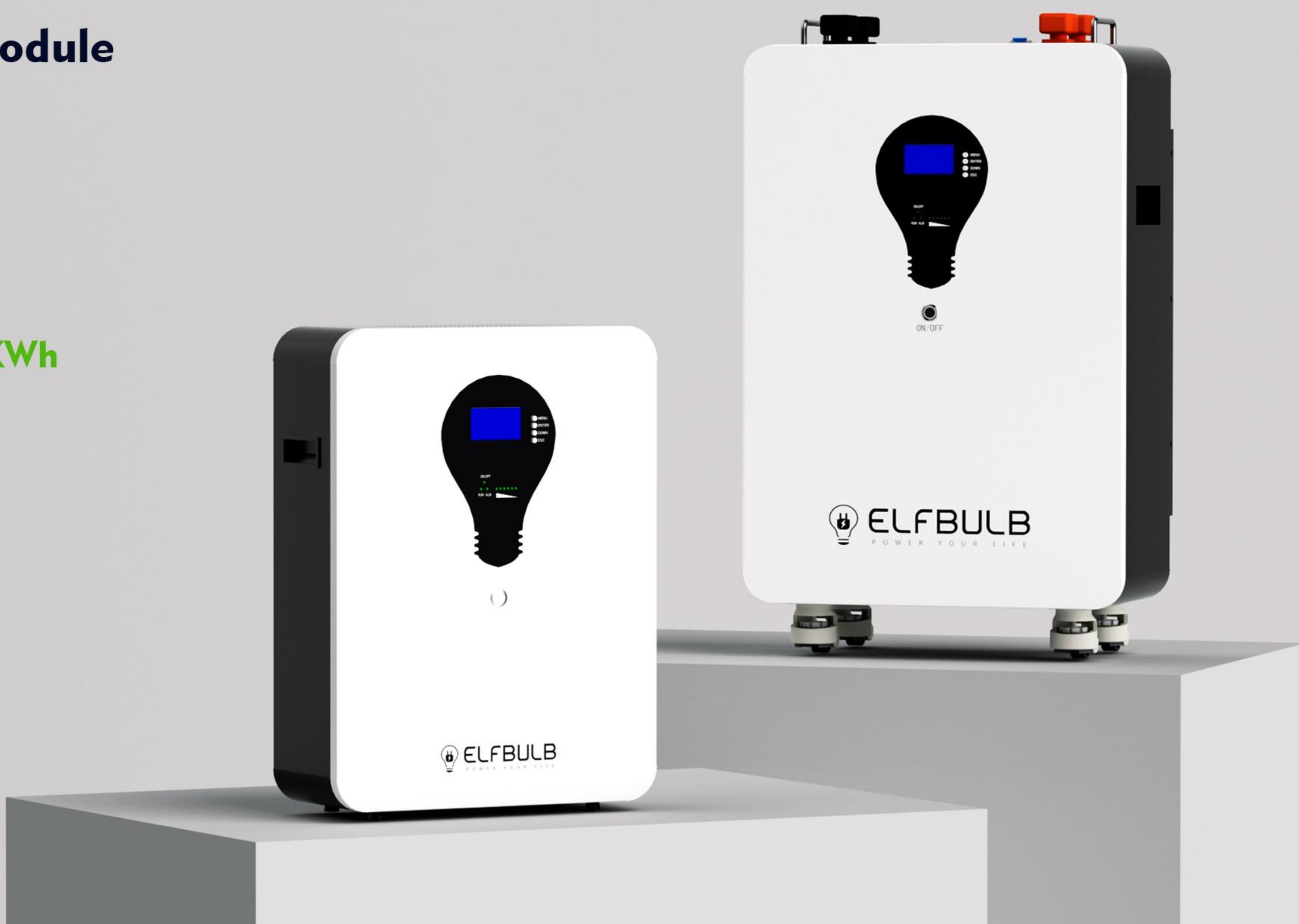
Support 15 units in parallels

5KWh — 76.8KWh

Expandable capacity

**Can stand
Powerwall**

**Life cycles
6000+**



SPECIFICATIONS

MODEL	EBW-05/51.2	EBW-10/51.2	EBW-15/51.2
Total Energy(kWh)	5.12	10.24	15.36
Capacity(Ah)	100	200	300
Nominal Voltage(V)	51.2	51.2	51.2
Float Voltage(V)	56	56	56
Equalization Voltage(V)	57.6	57.6	57.6
Discharge Cutting Voltage(V)	44.8	44.8	44.8
MAX.Charge & Discharge Current(A)	100	200	200
MAX C Rating	1C	1C	0.6C
Dimension(mm)	550x415x170	755x575x185	817x500x277
Net Weight(kg)	46.2	91.3	121
Scalable	1-16 in parallel		
Communication Ports	CAN,RS485,RS232		
Communicated Inverter	Goodwe/Victron/Sofar/Deye/Voltronic /Pylon /Luxpower Afore/Must/Sako/ Sorotec/ Sma/ Solis / Phocos /Kstar / Mpp Solar /Growatt/Megarevo/Srne		
Charging Temp Range(°C)	0~55		
Disharging Temp Range(°C)	-10~55		
Cycle Lifes	≥6000 cycles @80%DOD @25°C		
Warranty	5 years		
Certifications	CE,UN38.3,MSDS		
Function	WIFI,Breaker,Equalizer,Bluetooth(optional)		

Large Capacity Battery **EBF-1 Series**



LIFEPO4 BATTERY

Achieve energy self-sufficiency with reliable, clean and sustainable energy storage solutions for your home.

SPECIFICATIONS

MODEL	EBF-1/15	EBF-1/18	EBF-1/23
Total Energy(kWh)	15.36	18.43	23.55
Capacity(Ah)	300	360	460
Nominal Voltage(V)	51.2	51.2	51.2
Float Voltage(V)	56	56	56
Equalization Voltage(V)	57.6	57.6	57.6
Discharge Cutting Voltage(V)	44.8	44.8	44.8
MAX.Charge & Discharge Current(A)	200	200	200
MAX C Rating	0.6C	0.5C	0.4C
Dimension(mm)	912x682x385	912x682x385	1100x682x385
Net Weight(kg)	148.6	170.5	214.8
Scalable	1~16 in parallel (Recommend: 6pcs)		
Communication Ports	CAN,RS485,RS232		
Communicated Inverter	Goodwe/Victron/Sofar/Deye/Voltronic /Pylon /Luxpower Afore/Must/Sako/ Sorotec/ Sma/ Solis / Phocos /Kstar / Mpp Solar /Growatt/Megarevo/Srne		
Charging Temp Range(°C)	0~55		
Disharging Temp Range(°C)	-10~55		
Cycle Lifes	≥6000 cycles @80%DOD @25°C		
Warranty	5 years		
Certifications	CE,UN38.3,MSDS		
Function	WIFI,Breaker,Equalizer,Bluetooth(optional)		



Expandable up to 10KWH and 15KWH

5 KW/Inverter

Max.continuous discharge power

5 kWh - **15** kWh

Flexible capacity

5/10 Years

Optional warranty



Touch screen for easy operation and monitoring.



Ultra-slim design saves space, measuring just 150mm thick.



Expandable battery and inverter capacity



Easy Plug and Play: Simplifies installation and lowers costs.



WiFi Monitoring: Monitor system status conveniently via App.



Preset function for charging and discharging

SPECIFICATIONS

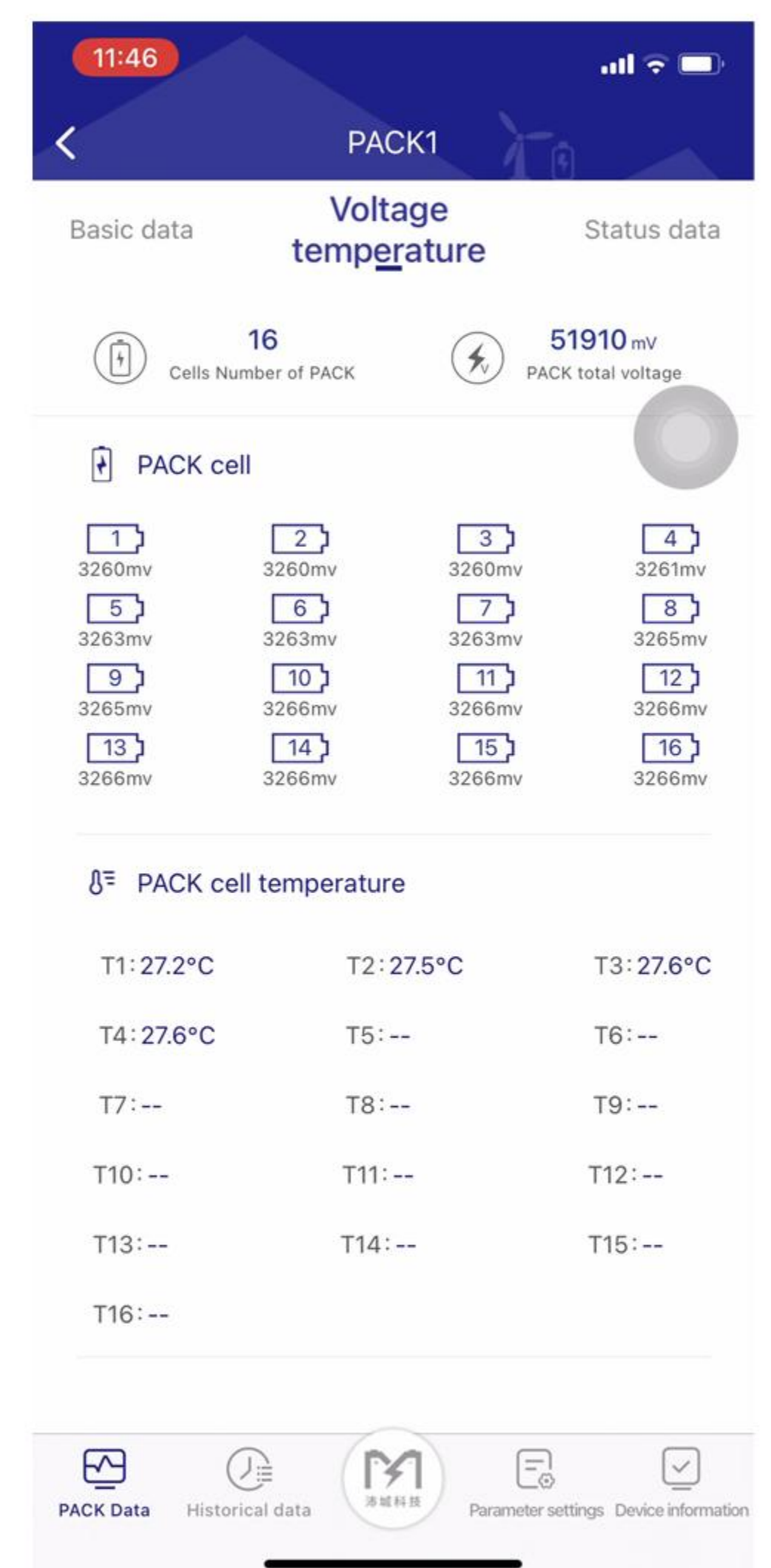
MODEL		EBA-2		
Inverter Model		5KW DC48V		
Rated Output Power		5000W		
Output Voltage Waveform		Pure Sine Wave		
Output Voltage Regulation		230Vac+5%		
Output Frequency		60Hz or 50HZ		
Peak Efficiency		>93%		
Overload Protection		60S@102%~110% load;10s@110%~130% load;3s@130%~150 load;200ms@≥150% load		
Surge Capacity		2 x rated power for 5 seconds		
Nominal DC Input Voltage		48Vdc		
Cold start Voltage		46.0Vdc		
Low DC Warning Voltage		44.0Vdc		
Low DC Cut-off Voltage		42.0Vdc		
High DC Recovery Voltage		58Vdc		
High DC Cut-off Voltage		61Vdc		
Charge Mode Specifications				
Charging Current @ Nominal Input Voltage		5KW:1~80A		
Absorption Voltage	AGM/FLD/LIB/CUS Battery	50vdc		
	Flooded battery	50vdc		
Floatingcharging voltage	AGM/FLD/LIB/CUS Battery	54.8Vdc		
	Flooded battery	54.8Vdc		
Bulk charging voltage(C.V voltage)	AGM/FLD/LIB/CUS Battery	57.6Vdc		
	Flooded battery	56.8Vdc		
Charging Algorithm		17-Step(Battery Type , AGM/FLD/LIB/CUS Battery)		
Solar Charging Mode				
Rated Power		5000W		
MPPT charger		60A		
solar charging current		80A		
Max,PV Array Open Circuit Voltage		450Vdc max		
PV Array MPPT Voltage Range		120-430Vdc		
Min battery voltage for PV charge		34Vdc		
Standby Power Consumption		2W		
Line mode charger				
charging current		60A 80A		
Line Voltage Range		90~280VAC(APP mode);170~280VAC(UPS mode)		
Battery Voltage Accuracy		+/-0.3%		
Voltage Accuracy		+/-2V		
Charging Algorithm		17-Step(Battery Type ,AGM/FLD/LIB/CUS Battery)		
Joint Utility and Solar charging		MPPT		
Max Charging Current		120A		
Default Charging Current		60A		
Battery Model		EBA-2	EBA-2	EBA-2
Total Energy		5.12kWh	10.24kWh	5.12kWh
Capacity		100Ah	200Ah	300Ah
Nominal Voltage		51.2V	51.2V	51.2V
Float Voltage		56V	56V	56V
Equalization Voltage		57.6V	57.6V	57.6V
Discharge Cutting Voltage		44.8V	44.8V	44.8V
MAX.Charge & Discharge Current		100A	100A	100A
MAX C Rating		1C	1C	1C
Dimension		740x588x195mm	1170x588x195mm	1600x588x195mm
Net Weight		65kg	115kg	165kg
Communication Ports		CAN,RS485,RS232		
Charging Temp Range		0~55		
Disharging Temp Range		-10~55		
Parallel		Support		
Cycle Lifes		≥6000 cycles @80%DOD @25		
Warranty		5 years		
Certifications		CE,UN38.3,MSDS		
Function		WIFI 、 Touch Screen		

All In One LiFePO4 Battery **EBA-3 Series**



» Key Features

- WiFi Monitoring: Monitor system status conveniently via App.
- Pure sine wave output
- Efficient power delivery (1 power factor)
- Expandable (up to 9 units)
- Works with wide range of solar panels
- Flexible battery setup (battery independent)
- Includes solar charger (100A MPPT)
- Maintains battery health (equalization)
- Built-in dust protection
- Delivers clean, stable power (sine wave output)
- 4 Charging Modes: solar, mains, or hybrid
- Uninterrupted power with bypass and inverter modes
- Saves energy (power saving mode)
- Quiet cooling (adjustable fan)



APP function display

SPECIFICATIONS

MODEL		EBA-3		
Inverter Model		5KW DC48V		
Rated Output Power		5000W		
Output Voltage Waveform		Pure Sine Wave		
Output Voltage Regulation		230Vac+5%		
Output Frequency		60Hz or 50HZ		
Peak Efficiency		>93%		
Overload Protection		60S@102%~110% load;10s@110%~130% load;3s@130%~150 load;200ms@≥150% load		
Surge Capacity		2 x rated power for 5 seconds		
Nominal DC Input Voltage		48Vdc		
Cold start Voltage		46.0Vdc		
Low DC Warning Voltage		44.0Vdc		
Low DC Cut-off Voltage		42.0Vdc		
High DC Recovery Voltage		58Vdc		
High DC Cut-off Voltage		61Vdc		
Charge Mode Specifications				
Charging Current @ Nominal Input Voltage		5KW:1~80A		
Absorption Voltage	AGM/FLD/LIB/CUS Battery	50vdc		
	Flooded battery	50vdc		
Floatingcharging voltage	AGM/FLD/LIB/CUS Battery	54.8Vdc		
	Flooded battery	54.8Vdc		
Bulk charging voltage(C.V voltage)	AGM/FLD/LIB/CUS Battery	57.6Vdc		
	Flooded battery	56.8Vdc		
Charging Algorithm		17-Step(Battery Type , AGM/FLD/LIB/CUS Battery)		
Solar Charging Mode				
Rated Power		5000W		
MPPT charger		60A		
solar charging current		80A		
Max,PV Array Open Circuit Voltage		450Vdc max		
PV Array MPPT Voltage Range		120-430Vdc		
Min battery voltage for PV charge		34Vdc		
Standby Power Consumption		2W		
Line mode charger				
charging current		60A 80A		
Line Voltage Range		90~280VAC(APP mode);170~280VAC(UPS mode)		
Battery Voltage Accuracy		+/-0.3%		
Voltage Accuracy		+/-2V		
Charging Algorithm		17-Step(Battery Type		
Joint Utility and Solar charging		MPPT		
Max Charging Current				
Default Charging Current		60A		
Battery Model		EBA-3	EBA-3	EBA-3
Total Energy		5.12kWh	10.24kWh	5.12kWh
Capacity		100Ah	200Ah	300Ah
Nominal Voltage		51.2V	51.2V	51.2V
Float Voltage		56V	56V	56V
Equalization Voltage		57.6V	57.6V	57.6V
Discharge Cutting Voltage		44.8V	44.8V	44.8V
MAX.Charge & Discharge Current		100A	100A	100A
MAX C Rating		1C	1C	1C
Dimension		740x588x195mm	1170x588x195mm	1600x588x195mm
Net Weight		65kg	115kg	165kg
Communication Ports		CAN,RS485,RS232		
Charging Temp Range		0~55		
Disharging Temp Range		-10~55		
Parallel		Support		
Cycle Lifes		≥6000 cycles @80%DOD @25		
Warranty		5 years		
Certifications		CE,UN38.3,MSDS		
Function		WIFI		

All In One LiFePO4 Battery

EBA-4 Series



Intelligence monitoring



Household appliances.



Save storage of energy



Multiple options for capacity

100%
Discharge(DOD)

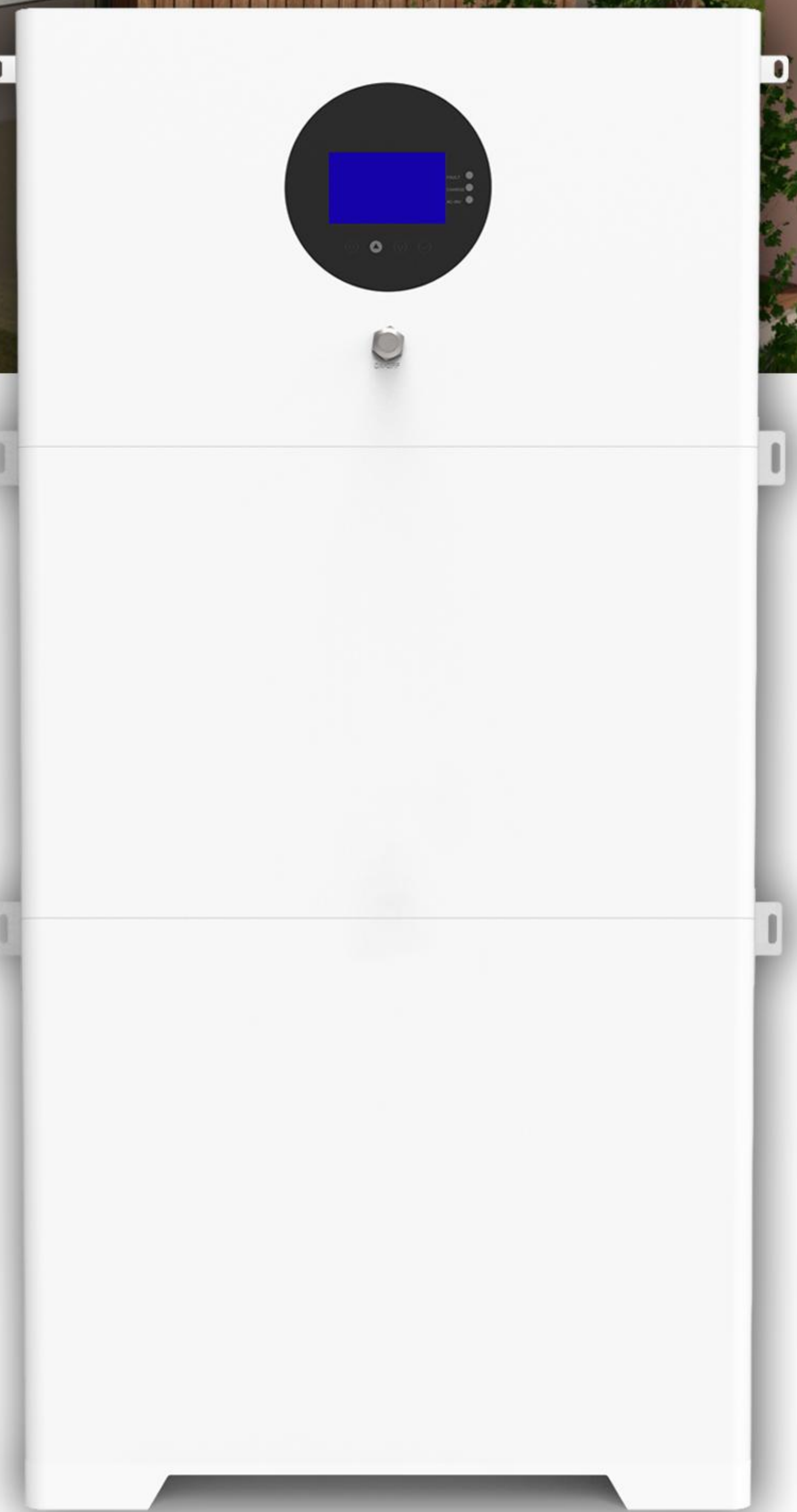
UN38.3 CE
Certifications

Optional Capacity
100Ah-300Ah

Touch Screen
Easy to operate

APP
Wifi Monitoring

5 Years
Warranty



Inverter key features:

- Pure sine wave output
- Efficient power delivery (1 power factor)
- Expandable (up to 6 units)
- Works with wide range of solar panels
- Flexible battery setup (battery independent)
- Includes solar charger (100A MPPT)
- Maintains battery health (equalization)
- Built-in dust protection

Lithium battery product features:

- Delivers clean, stable power (sine wave output)
- 4 Charging Modes: solar, mains, or hybrid
- Uninterrupted power with bypass and inverter modes
- Saves energy (power saving mode)
- Quiet cooling (adjustable fan)
- Can sell electricity to the grid

SPECIFICATIONS

MODEL	EBA-4		
Off-grid output			
Rated output power	5,500W		
Maximum peak power	11,000VA		
Rated output voltage	230Vac Single phase		
Load motor capacity	4HP		
Output frequency range	50Hz ± 0.3Hz/60Hz ± 0.3Hz		
Switching time	10ms		
Grid output			
Rated output power	5,500W		
Maximum apparent power	11,000VA		
Rated output current	24A		
Maximum output current	26.4A		
Total harmonic current	3%		
Power factor	0.8 lead/0.8 lag		
Rated voltage	230Vac Single phase		
Frequency	50Hz/60Hz		
Photovoltaic input			
Number of MMPPT channels	2		
Maximum input power	4,000W+4,000W		
Maximum input current	16A+16A		
Maximum short circuit current	27A+27A		
Maximum open circuit voltage	500Vdc+500Vdc		
MPPT operating voltage range	120~450Vdc		
Mains/generator input			
Input voltage range	90~280Vac		
Input frequency range	50/60Hz		
Bypass overload current	40A		
Efficiency			
MPPT tracking efficiency	99.9%		
maximum efficiency	97.5%		
Basic parameters			
Operating temperature range	-25°C ~ 60°C		
Humidity range	0% ~ 100%		
Noise	60dB		
Cooling method	Heat sink + intelligent air cooling		
Battery Model	EBA-4	EBA-4	EBA-4
Total Energy	5.12kWh	10.24kWh	5.12kWh
Capacity	100Ah	200Ah	300Ah
Nominal Voltage	51.2V	51.2V	51.2V
Float Voltage	56V	56V	56V
Equalization Voltage	57.6V	57.6V	57.6V
Discharge Cutting Voltage	44.8V	44.8V	44.8V
MAX.Charge & Discharge Current	100A	100A	100A
MAX. C Rating	1C	1C	1C
Dimension	230x632x895mm	230x632x1330mm	230x632x11765mm
Net Weight	65kg	115kg	165kg
Communication Ports	CAN,RS485,RS232		
Charging Temp Range	0~55		
Disharging Temp Range	-10~55		
Parallel	Support		
Cycle Lifes	≥6000 cycles @80%DOD @25		
Warranty	5 years		
Certifications	CE,UN38.3,MSDS		
Function	WIFI,Touch Screen		

Touch Screen LiFePO4 Battery **EBWT-2 Series**



Over Temperature Protection



Cut-off Protection



Short Circuit Protection



Over discharge Protection



Over voltage Protection

SPECIFICATIONS

MODEL	EBWT-2/7	EBWT-2/10	EBWT-2/15
Total Energy(kWh)	7.68	10.24	15.36
Capacity(Ah)	280	200	300
Nominal Voltage(V)	25.6	51.2	51.2
Float Voltage(V)	28.3	56.5	56.5
Equalization Voltage(V)	28.8	57.6	57.6
Discharge Cutting Voltage(V)	22.4	44.8	44.8
MAX.Charge & Discharge Current(A)	100	200	200
MAX C Rating	1C	1C	0.6C
Dimension(mm)	800x430x200	810x605x180	880x472x268
Net Weight(kg)	71.2	98	126.9
Scalable	1-16 in parallel(Recommend: 6pcs)		
Communication Ports	CAN,RS485,RS232		
Communicated Inverter	Goodwe/Victron/Sofar/Deye/Voltronic /Pylon /Luxpower Afore/Must/Sako/Sorotec/ Sma/ Solis / Phocos /Kstar / Mpp Solar /Growatt/Megarevo/Srne		
Charging Temp Range(°C)	0-55		
Disharging Temp Range(°C)	-10-55		
Cycle Lifes	≥6000 cycles @80%DOD @25°C		
Warranty	5 years		
Certifications	CE,UN38.3,MSDS		
Function	WIFI,Breaker,Equalizer,Bluetooth,7 inch Touch Screen		

Touch Screen LiFePO4 Battery **EBWT-3 Series**



» Features

- 7 inch touch screen
- Floor or wall mounting
- APP/ WiFi Monitoring
- With RS232,RS485,CAN
- Connect up to 15 units in parallel
- More than 6000+ cycles @80%DOD @25°C
- Works seamlessly with all mainstream inverters
- With breaker,equalizer,wifi,bluetooth

SPECIFICATIONS

MODEL	EBWT-3/5	EBWT-3/10	EBWT-3/15
Total Energy(kWh)	5.12	10.24	15.36
Capacity(Ah)	100	200	300
Nominal Voltage(V)	51.2	51.2	51.2
Float Voltage(V)	56	56	56
Equalization Voltage(V)	57.6	57.6	57.6
Discharge Cutting Voltage(V)	44.8	44.8	44.8
MAX.Charge & Discharge Current(A)	100	200	200
MAX C Rating	1C	1C	0.6C
Dimension(mm)	693x430x180	905x504x195	880x478x268
Net Weight(kg)	52	100	133
Scalable	1~16 in parallel(Recommend: 6pcs)		
Communication Ports	CAN,RS485,RS232		
Communicated Inverter	Goodwe/Victron/Sofar/Deye/Voltronic /Pylon /Luxpower Afore/Must/Sako/ Sorotec/ Sma/ Solis / Phocos /Kstar / Mpp Solar /Growatt/Megarevo/Srne		
Charging Temp Range(°C)	0~55		
Disharging Temp Range(°C)	-10~55		
Cycle Lifes	≥6000 cycles @80%DOD @25°C		
Warranty	5 years		
Certifications	CE,UN38.3,MSDS		
Function	WIFI,Breaker,Equalizer,Bluetooth,7 inch Touch Screen		

Stackable LiFePO4 Battery **BES-3 Series**

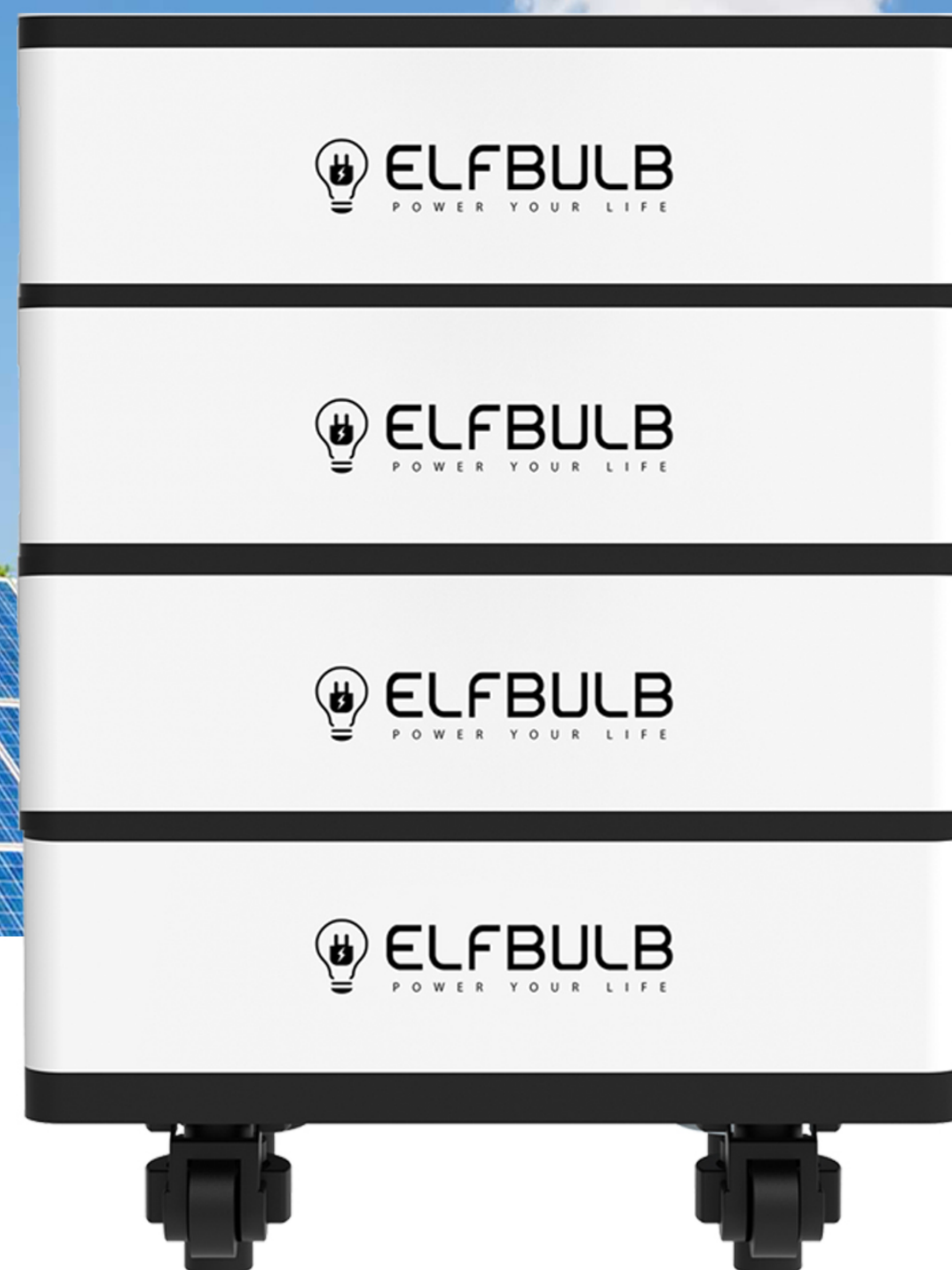


4.8kWh To 196kWh

- Long lifespan: 6000+ cycles
- 1C charge & discharge rate
- 100% usable energy with 4.8KWh for each module
- Works seamlessly with all mainstream inverters
- 5/10 years factory warranty

SPECIFICATIONS

MODEL	EBS-3-5	EBS-3-10	EBS-3-15	EBS-3-20
Total Energy(kWh)	4.8	9.6	14.4	19.2
Number of batteries	1	2	3	4
Capacity(Ah)	100	200	300	400
Nominal Voltage(V)	48	48	48	48
Float Voltage(V)	52.5	52.5	52.5	52.5
Equalization Voltage(V)	54	54	54	54
Discharge Cutting Voltage(V)	42	42	42	42
MAX.Charge & Discharge Current(A)	100	100	100	100
MAX C Rating	1C	1C	1C	1C
Dimension(mm)	620x460x195	620x460x390	620x460x585	620x460x780
Single Battery Net Weight(kg)	50			
Scalable	1-16 in parallel			
Communication Ports	CAN,RS485,RS232			
Communicated Inverter	Goodwe/Victron/Sofar/Deye/Voltronic /Pylon /Luxpower Afore/Must/Sako/ Sorotec/ Sma/ Solis / Phocos /Kstar / Mpp Solar /Growatt/Megarevo/Srne			
Charging Temp Range(°C)	0~55			
Disharging Temp Range(°C)	-10~55			
Cycle Lifes	≥6000 cycles @80%DOD @25°C			
Warranty	5 years			
Certifications	UL,CE,UN38.3,MSDS			
Function	WIFI,Breaker,Equalizer,Bluetooth(optional)			



SPECIFICATIONS

MODEL	EBS-4
Single Battery Module Energy(kWh)	5.12
Single Battery Module Capacity(Ah)	100
Single Battery Module Voltage(V)	51.2
Float Voltage(V)	56
Equalization Voltage(V)	57.6
Discharge Cutting Voltage(V)	44.8
MAX.Charge & Discharge Current(A)	100
MAX C Rating	1C
Single Battery Module Dimension(mm)	620x438x190
Single Battery Module Net Weight(kg)	51
Scalable	1~16 in parallel
Communication Ports	CAN,RS485,RS232
Communicated Inverter	Goodwe/Victron/Sofar/Deye/Voltronic /Pylon /Luxpower Afore/Must/Sako/ Sorotec/ Sma/ Solis / Phocos /Kstar / Mpp Solar /Growatt/Megarevo/Srne
Charging Temp Range(°C)	0~55
Disharging Temp Range(°C)	-10~55
Cycle Lifes	≥6000 cycles @80%DOD @25°C
Warranty	5 years
Certifications	CE,UN38.3,MSDS

High Voltage LiFePO4 Battery **EBH-1 Series**



- 20kWh to 50kWh <<
- High voltage controller box <<
- Uninterruptible power supply <<
- Batteries can be stacked up to 10 units <<

SPECIFICATIONS

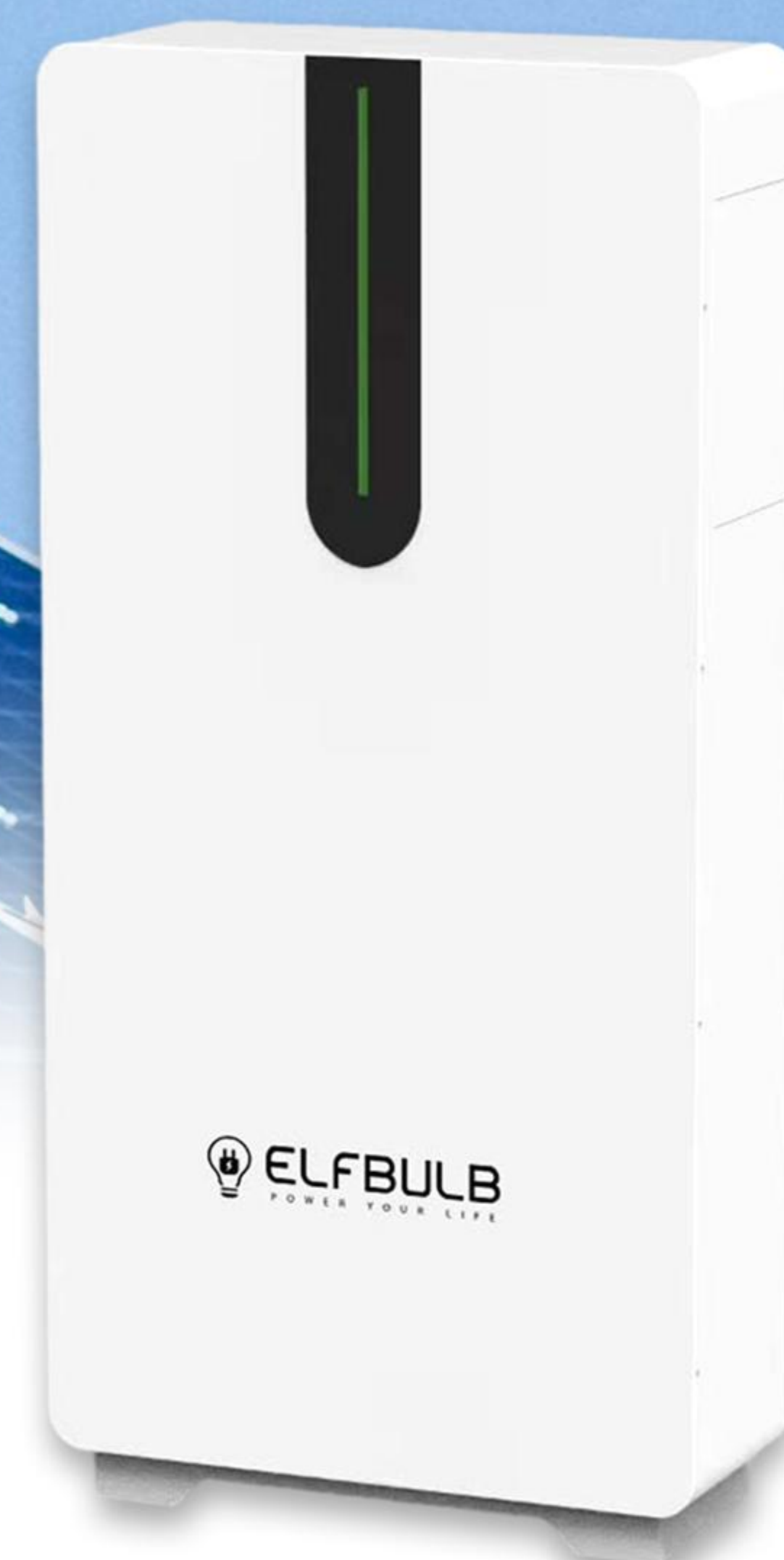
MODEL	EBH-1 (High Voltage Stacked Lithium Battery)				
Battery System Capacity(kWh)	20.48	25.6	30.72	35.84	40.96
Battery System Voltage (V)	204.8	256	307.2	358.4	409.6
Battery System Capacity (Ah)	100				
Single Battery Energy(kWh)	5.12				
Single Battery Voltage (V)	51.2				
Single Battery Capacity (Ah)	100				
Battery Module Quantity (pcs)	4	5	6	7	8
Battery System Charge Cut off Voltage (V)	233.6	292	350.4	408.8	467.2
Discharge & Charge Current (Amps, Standard)	20				
Discharge & Charge Current (Amps, Rated)	50				
Discharge & Charge Current (Amps, Max. 15min)	100				
Battery System Discharge Lower Voltage (V)	192	240	288	336	384
Efficiency (% at 0.5C-rate)	95				
Depth of Discharge (%)	95				
Dimension(Not include base)(mm)	600*475*942	600x475x1300	600x475x1318	600x475x1506	600x475x1694
Weight(kg)	262	316	370	425	479
Communication	RS485,CAN				
Charging Temp Range(°C)	0~55				
Disharging Temp Range(°C)	-10~55				
Certifications	CE,MSDS,UN38.3				

High Voltage LiFePO4 EBH-2 & EBH-3 Series

- Modular structure, easy to install
- Support multiple communication protocols
- Support high current charging/discharging
- LED lights display equipment parameters in real time
- Supports up to 4 clusters in parallel
- Can be used with hybrid inverter



EBH-2 Series



EBH-3 Series

SPECIFICATIONS

MODEL	EBH-2 (High Voltage Lithium Battery)	
Batteries materials	Lithium iron phosphate	
Series parallel mode (S series,P parallel)	120S1P	60~120S1P
Nominal voltage	384V(Single module 96V)	192~384V
Nominal capacity	27Ah	52Ah
Single battery pack capacity	2592Wh	
Size	EBH-2: 560*350*975mm	
Weight	EBH-2: 30kg(Single module)	
Parallel support	Parallel terminals are supported	
Output port mode	Terminal	
Charging way	CC/CP/VP	
Charging current	0.2C(standard)	
Maximum charging current	Max1C@25	
Discharge way	CC/CPVP	
Discharge current	0.5C	
Maximum discharge current	Max1C @25	
Communication interface	RS485/RS232/CAN	
Charging operating temperature:charging	Charging:0~+50°C	
Discharge operating temperature	Discharge:-20~+55°C	

Rack Mounted LiFePO4 Battery **EBR Series**



Over Temperature Protection



Cut-off Protection



Over discharge Protection



Over voltage Protection



Short Circuit Protection



Over voltage Protection



APPLICATION

Lithium iron phosphate batteries are widely used in various applications, including electric vehicles, energy storage systems, lighting equipment, mobile devices, and solar systems.

SPECIFICATIONS

MODEL	EBR-02/51.2	EBR-05/51.2	EBR-10/51.2
Total Energy(kWh)	2.56	5.12	10.24
Capacity(Ah)	100	100	200
Nominal Voltage(V)	25.6	51.2	51.2
Float Voltage(V)	28	56	56
Equalization Voltage(V)	28.8	57.6	57.6
Discharge Cutting Voltage(V)	22.4	44.8	44.8
MAX.Charge & Discharge Current(A)	100	100	200
MAX C Rating	1C	1C	1C
Dimension(mm)	470x450x133	490x484x170	490*484*250
Net Weight(kg)	21	43	72
Scalable	1-16 in parallel		
Communication Ports	CAN,RS485,RS232		
Communicated Inverter	Goodwe/Victron/Sofar/Deye/Voltronic /Pylon /Luxpower Afore/Must/Sako/Sorotec/ Sma/ Solis / Phocos /Kstar / Mpp Solar /Growatt/Megarevo/Srne		
Charging Temp Range(°C)	0~55		
Disharging Temp Range(°C)	-10~55		
Cycle Lifes	≥6000 cycles @80%DOD @25°C		
Warranty	5 years		
Certifications	CE,UN38.3,MSDS		
Function	WIFI,Breaker,Equalizer,Bluetooth(optional)		

High Voltage Cabinet Series



SPECIFICATIONS

MODEL	EBH-153-100	EBH-204-100	EBH-409-100	EBH-614-100
Module Energy	5.12KWH			
Module Nominal Voltage	51.2V			
Module Capacity	100Ah			
BAT Module Qty(Optional)	3x51.2V100Ah	4x51.2V100Ah	8x51.2V100Ah	12x51.2V100Ah
System Nominal Voltage	153.6V	204.8V	409.6V	614.4V
System Operating Voltage	120-175.2V	160-234V	320-467.2V	480-700V
System Energy	15.36KWH	20.48KWH	40.96KWH	61.44KWH
Charge/Discharge Current(A)	Recommend:50 Nominal:100 Peak Discharge 150 (2mins,25°C)			
Working Temperature(°C)	Charge:0-55/Discharge:-20-55			
Communication Port	CAN/RS232/RS485			
Humidity	5-85%RH			
Altitude	≤2000m			
IP Rating of Enclosure	IP54			
Net Weight(without cabinet)	150kg	230kg	500kg	650kg
Dimension(mm)	589*590*900	1200* 693*1102	2090*693*1102	550*600*2240
Installation Location	Rack Mounting			
Storage Temperature(C)	0-35			
Recommend DOD of Discharge	90%			
Cycle Life	25±2°C, 0.5C/0.5C,EOL70%≥6000			
Certification	CE/IEC62619 /UL1973 /UL9540A /UN38.3			

Electric Vehicle LiFePO4 Battery **EBE Series**

Suitable for Swapping Station, Golf carts, Electric Sightseeing Car, Shuttle Bus, Electric Patrol Car, Electric Forklifts, Electric Sweepers, Reach Lift Truck, and all kinds of low-speed car, etc



Features

- LifePO4 Batteries more ideally for your golf carts, tuktuk and low speed vehicles
- Smaller, lighter, more Powerful and drive longer than Lead acid battery
- Safe performance with Smart BMS control for high current, voltage, temperature protection
- Free maintenance, Eco-friendly
- Most Competitive price with free technical support
- Support for private Logo for OEM & ODM
- Compatible with major brands of golf carts controllers

SPECIFICATIONS (48V)

MODEL	EBE-48-30	EBE-48-50	EBE-48-60	EBE-48-100
Cell	LiFePO4 Battery			
Nominal voltage	48V	48V	48V	48V
Nominal capacity	30Ah	50Ah	60Ah	100Ah
Energy	1440Wh	2400Wh	2880Wh	4800Wh
Cycle life	> 3000 cycles 80%DOD @25°C			
Series parallel mode	15S1P	15S1P	15S1P	15S1P
Operating temperature	Charging 0~+55 Humidity 15%-75% Storage 10~+50			
Protection	Electronic circuit breaker,BMS voltage protection,current limiting			
Water dust resistance	IP55			
Function	Bluetooth,Led Screen (optional)			

SPECIFICATIONS (60V)

MODEL	EBE-60-30	EBE-60-50	EBE-60-80	EBE-60-160
Cell	LiFePO4 Battery			
Nominal voltage	60.8V	60.8V	60.8V	60.8V
Nominal capacity	30Ah	40Ah	80Ah	160Ah
Energy	1824Wh	2432Wh	4864Wh	9728Wh
Cycle life	> 3000 cycles 80%DOD @25°C			
Series parallel mode	19S1P	19S1P	19S1P	19S2P
Operating temperature	Charging 0~+55 Humidity 15%-75% Storage 10~+50			
Protection	Electronic circuit breaker,BMS voltage protection,current limiting			
Water dust resistance	IP55			
Function	Bluetooth,Led Screen (optional)			

SPECIFICATIONS (72V)

MODEL	EBE-72-50	EBE-72-100	EBE-72-200	EBE-72-230
Cell	LiFePO4 Battery			
Nominal voltage	73.6V	73.6V	73.6V	73.6V
Nominal capacity	50Ah	100Ah	200Ah	230Ah
Energy	3680Wh	7360Wh	14720Wh	16928Wh
Cycle life	> 3000 cycles 80%DOD @25°C			
Series parallel mode	23S1P	23S1P	23S1P	23S2P
Operating temperature	Charging 0~+55 Humidity 15%-75% Storage 10~+50			
Protection	Electronic circuit breaker,BMS voltage protection,current limiting			
Water dust resistance	IP55			
Function	Bluetooth,Led Screen (optional)			

Lead Acid Replacement Battery **EBL Series**

- Lawn and Garden Tools
- Parking Lots
- Garages and Warehouses
- Home Use Cars
- Marine Backup Power Supply
- Photovoltaic 12V, 24V, 48V Off-Grid Applications
- Telecom Base Station Energy Storage
- Electric Wheelchairs and Scooters
- Golf Cart Parking Air Conditioning



SPECIFICATIONS (12.8V)

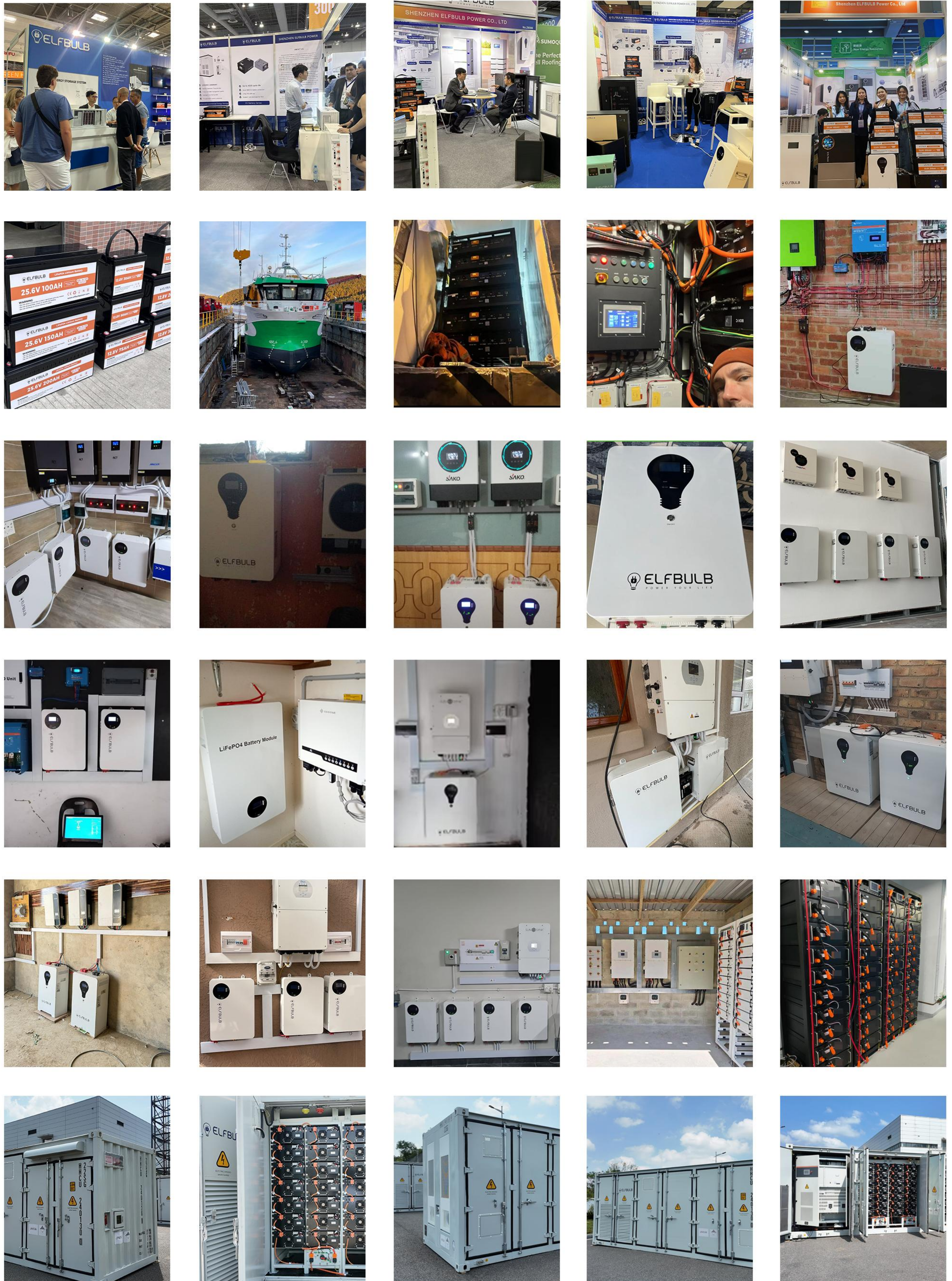
MODEL	EBL-12-09	EBL-12-18	EBL-12-30	EBL-12-50	EBL-12-100	EBL-12-150	EBL-12-200	EBL-12-300
Cell	LiFePO4 Battery							
Nominal voltage	12.8V	12.8V	12.8V	12.8V	12.8V	12.8V	12.8V	12.8V
Nominal capacity	9Ah	18Ah	30Ah	50Ah	100Ah	150Ah	200Ah	300Ah
Energy	115.2Wh	230Wh	384Wh	640Wh	1280Wh	1920Wh	2560Wh	3840Wh
Cycle life	6000 cycles @80% DOD							
Series parallel mode	4S1P	4S1P	4S2P	4S1P	4S1P	4S1P	4S1P	4S1P
Operating temperature	Charging 0~+55 Humidity 15%~75% Storage 10~+50							
Protection	Electronic circuit breaker,BMS voltage protection,current limiting							
Water dust resistance	IP65							
Net Weight(kg)	1.02	2	3.5	5.28	10.3	14.9	19.5	26.5
Size(mm)	151*94*65	180*168*74	231*145*211	231*145*211	339*185*218	483*170*240	502*186*243	502*186*243
Function	Bluetooth,Led Screen (optional)							

SPECIFICATIONS (25.6V & 48V)

MODEL	EBL-24-100	EBL-24-150	EBL-24-200	EBL-24-230	EBL-48-50	EBL-48-100
Cell	LiFePO4 Battery					
Nominal voltage	25.6V	25.6V	25.6V	25.6V	48V	48V
Nominal capacity	100Ah	150Ah	200Ah	230Ah	50Ah	100Ah
Energy	2560Wh	3840Wh	5120Wh	5888Wh	2400Wh	4800Wh
Cycle life	6000 cycles @80% DOD					
Series parallel mode	8S1P	8S1P	8S2P	8S1P	15S1P	15S1P
Operating temperature	Charging 0~+55 Humidity 15%~75% Storage 10~+50					
Protection	Electronic circuit breaker,BMS voltage protection,current limiting					
Water dust resistance	IP65					
Net Weight(kg)	19.1	25.8	37.2	40	21	42
Size(mm)	502*186*243	502*186*243	523*269*218	520*269*220	405*173*208	521*269*220
Function	Bluetooth,Led Screen (optional)					

GLOBAL CASES

We would like to take this opportunity to express our heartfelt thanks to every dear customer every time we meet. Your support is our motivation, let us create a better tomorrow together!





Pakistan Peshawar Service Center

Phone: 0334-1920211(Muzamil Khan)

03005951932(Sifat)

Email: info@yuyangenergy.com

Branch Location No1:

Office no G8 Mubarak Plaza Sonheri Masjid Road Peshawar Cantt.

Branch Location No2:

GSM plaza GPO lane kalabari market peshawar cantt

Brand Social Media Account

Facebook: Elfbulb Battery

Instagram: elfbulbbattery

Linkdin: Elfbulbpower

Youtube: ELFBULB Battery

Tiktok: solarstorage

Shenzhen Yuyang New Energy Co., Ltd (Yuyang New Energy Co.,Ltd)

Email: info@yuyangenergy.com

Web: www.elfbulbpower.com www.yuyangenergy.com

Company Address:

Room 603, Liangjizhahui Building, 184 Qingquan Road, Yucui community, Longhua District, Shenzhen

Factory Address:

No.18, Yucai Road, Jinji Village, Dalingshan Town, Dongguan City, Guangdong Province, China

Shenzhen Yuyang New Energy Co., Ltd is a high-tech enterprise established in 2010 that specializes in the R&D, manufacture, and sales of LifePo4 rechargeable lithium energy storage batteries. Our main product categories include home energy storage systems, commercial & industrial energy storage container systems, and low-speed vehicle batteries. As a professional LifePO4 lithium energy storage battery manufacturer, we cooperate with top cell brands and have obtained ISO9001: 2008 and ISO14001: 2004 certifications. Our factory has a production capacity of 20,000 units per month and we retain a safety stock of 8 million USD for battery cells.

